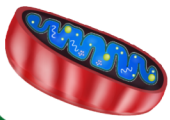


# ANIMAL AND PLANT CELLS

## MITOCHONDRIA

Where most respiration occurs.



Plant and Animal Cells

## CELL MEMBRANE

Controls the movement of substances in and out of the cell.

Plant and Animal Cells

## VACUOLE

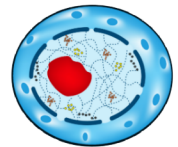
Contains cell sap which keeps the cell firm.

Plant Cells

## NUCLEUS

Contains genetic material and controls what happens in the cell.

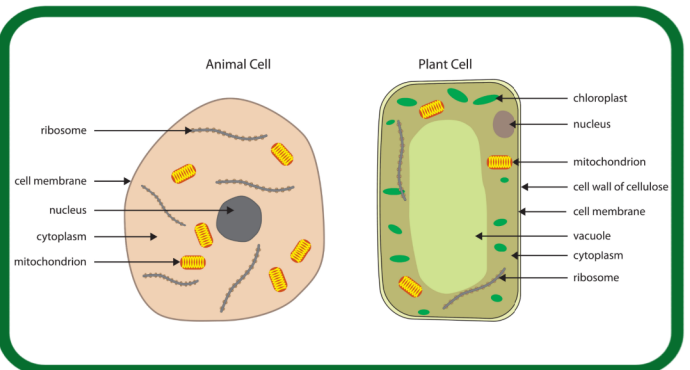
Plant and Animal Cells



## CYTOPLASM

Jelly like substance where chemical reactions take place.

Plant and Animal Cells



## CELL WALL

Tough outer structure which supports the cell.

Plant Cells

## CHLOROPLASTS

Where photosynthesis occurs. Contain chlorophyll.

Plant Cells