

HALLOWEEN SCIENCE QUIZ



ROUND 1 - CREEPY CRAWLIES

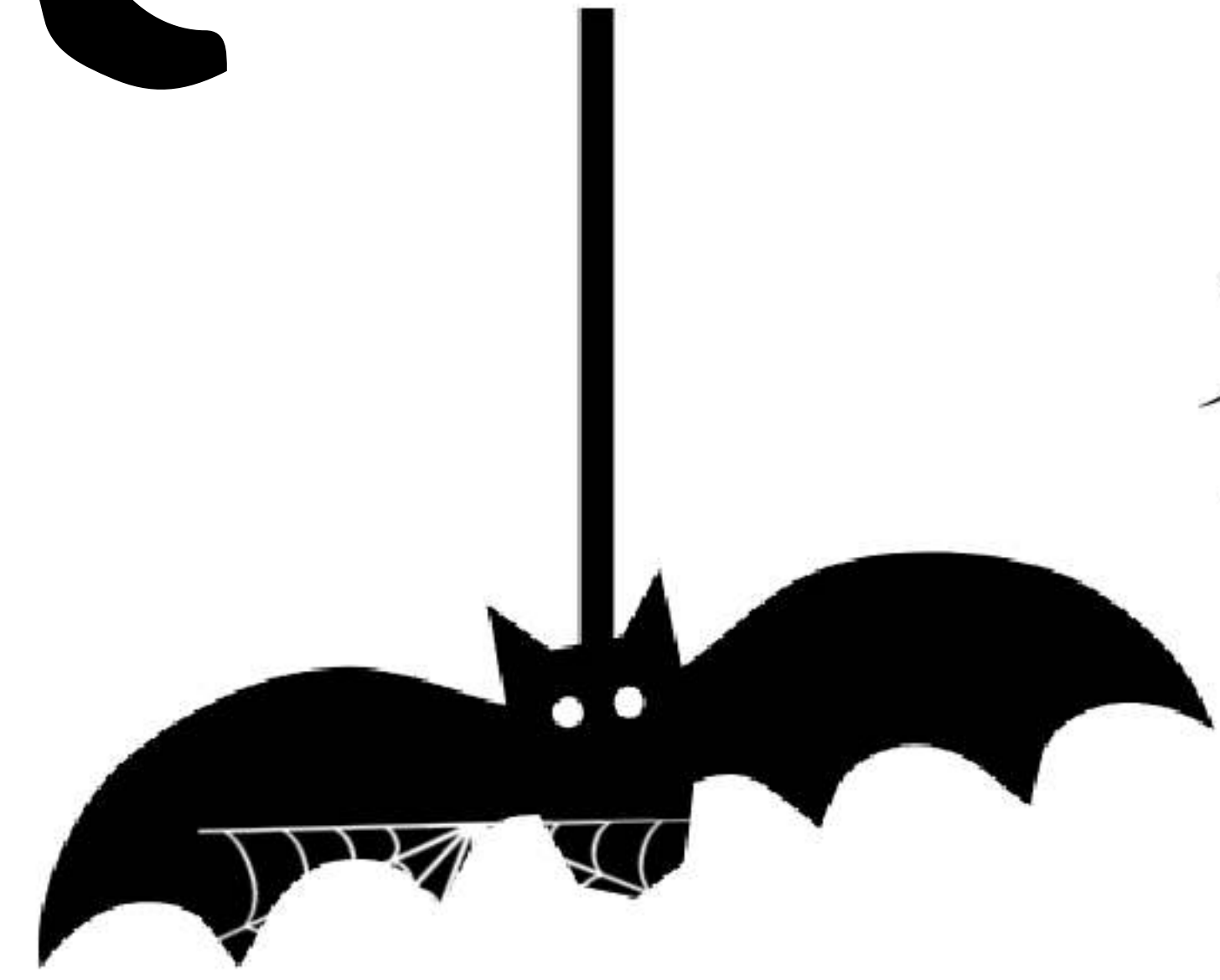
Q1. What is a fear of spiders called?

Q2. True or False: Spiders don't have antennae?

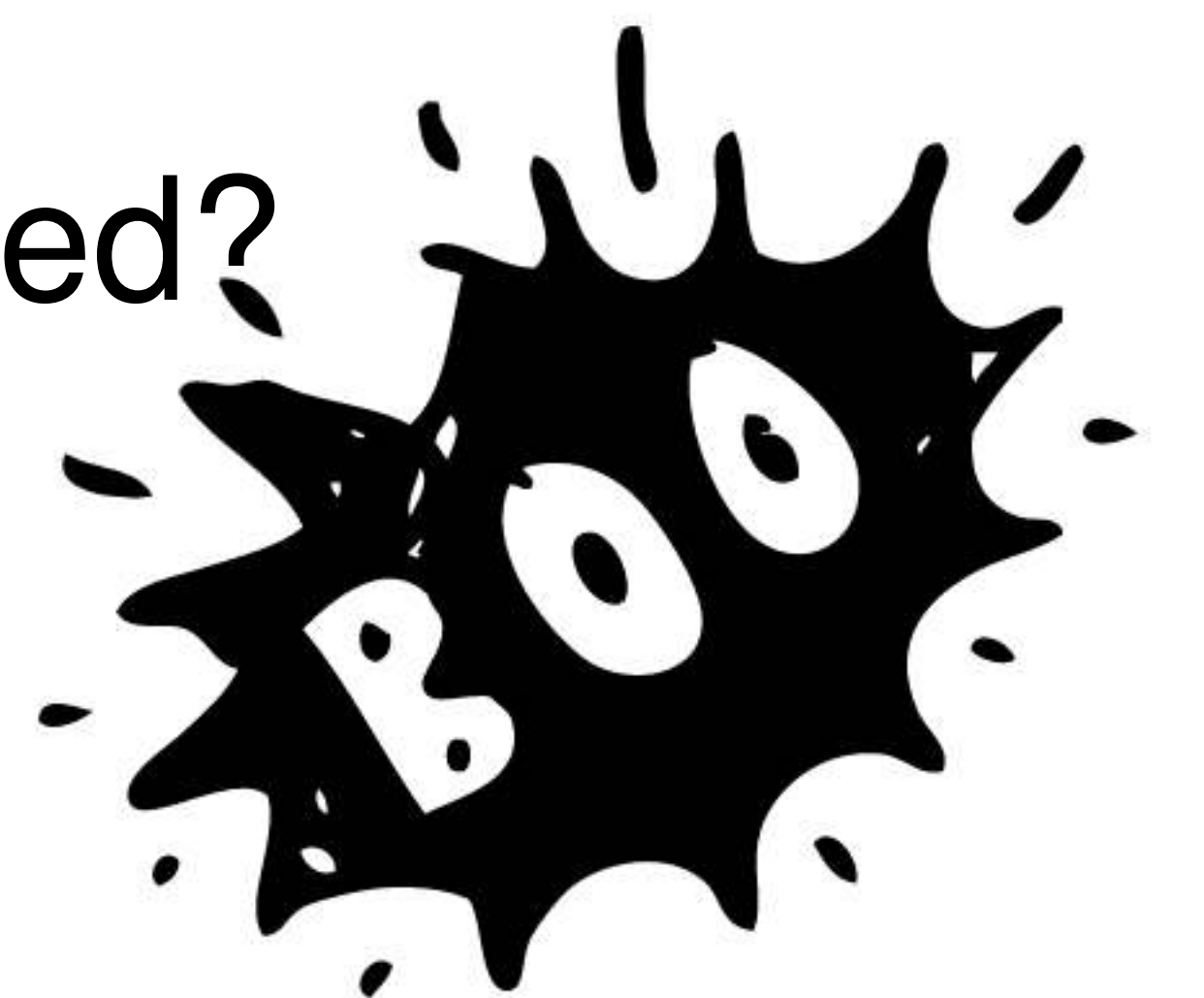
Q3. True or False: Goliath Bird Eating spiders eat birds?

Q4. On which continent would you not find a scorpion?

Q5. What is the hard outer covering of an insect's body called?



ROUND 2 - ALL ABOUT BLOOD



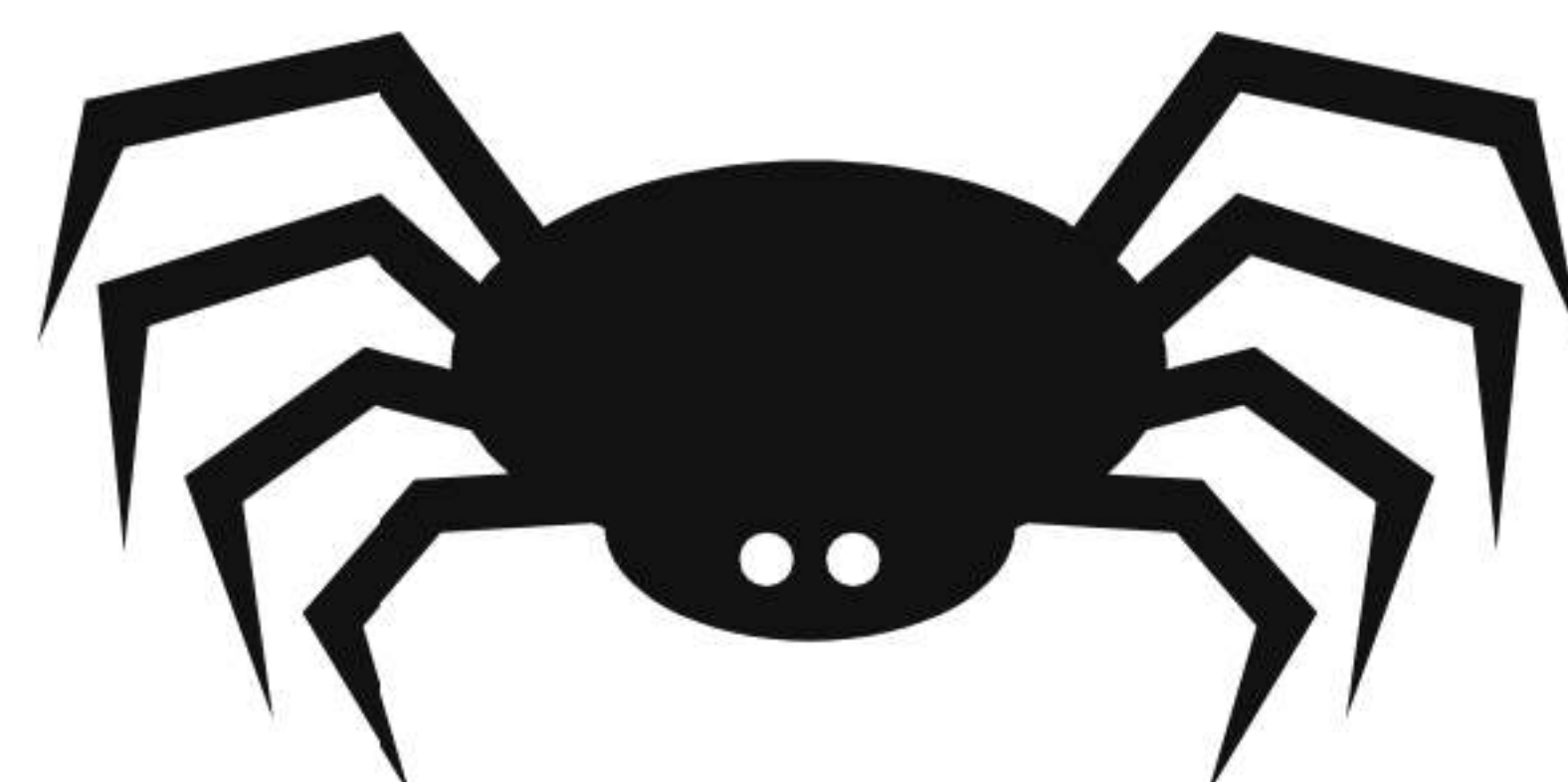
Q1. How many litres of blood does the average human adult have?

Q2. How long do red blood cells live, 4 days, 4 weeks or 4 months?

Q3. What percentage of your body is blood?

Q4. What's the common name for dried blood over a cut?

Q5. What shape is a red blood cell?



HALLOWEEN SCIENCE QUIZ



ROUND 3 - PUMPKINS



Q1. Are pumpkins a vegetable or a fruit?

Q2. Around how many seeds does an average pumpkin have? 100, 300 or 500?

Q3. What's the common name for a decorated pumpkin?

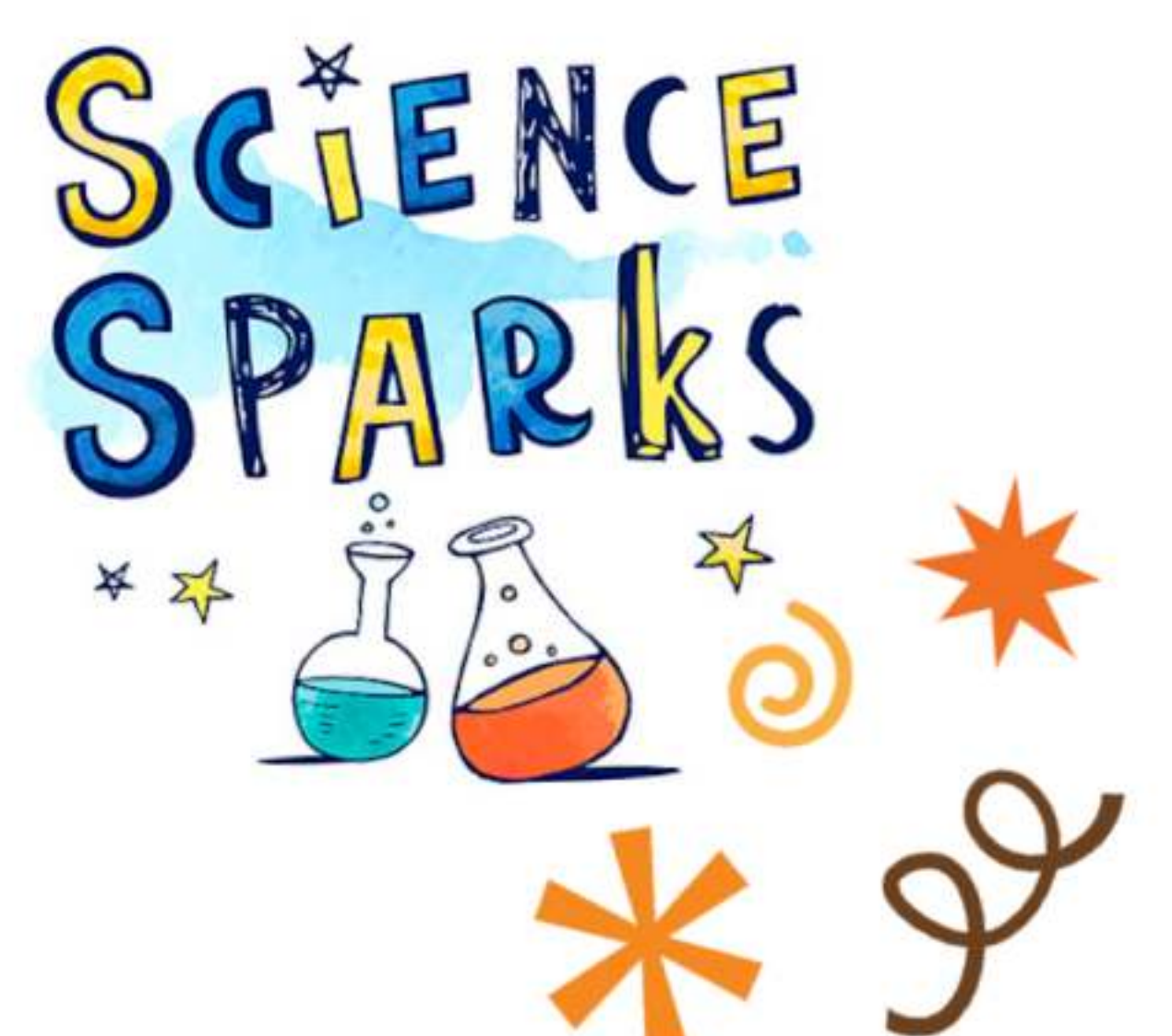
Q4. True or False: Pumpkins are 90% water?

Q5. Which film has a pumpkin carriage?

Q6. True or False? Pumpkin flowers are pollinated by bees?

Q7. What's the name of the pigment that gives pumpkins their orange colour?

Q8. Originally Jack-o-lanterns were made from which other vegetables?



HALLOWEEN

SCIENCE QUIZ



ROUND 4 - WHAT IS IT?



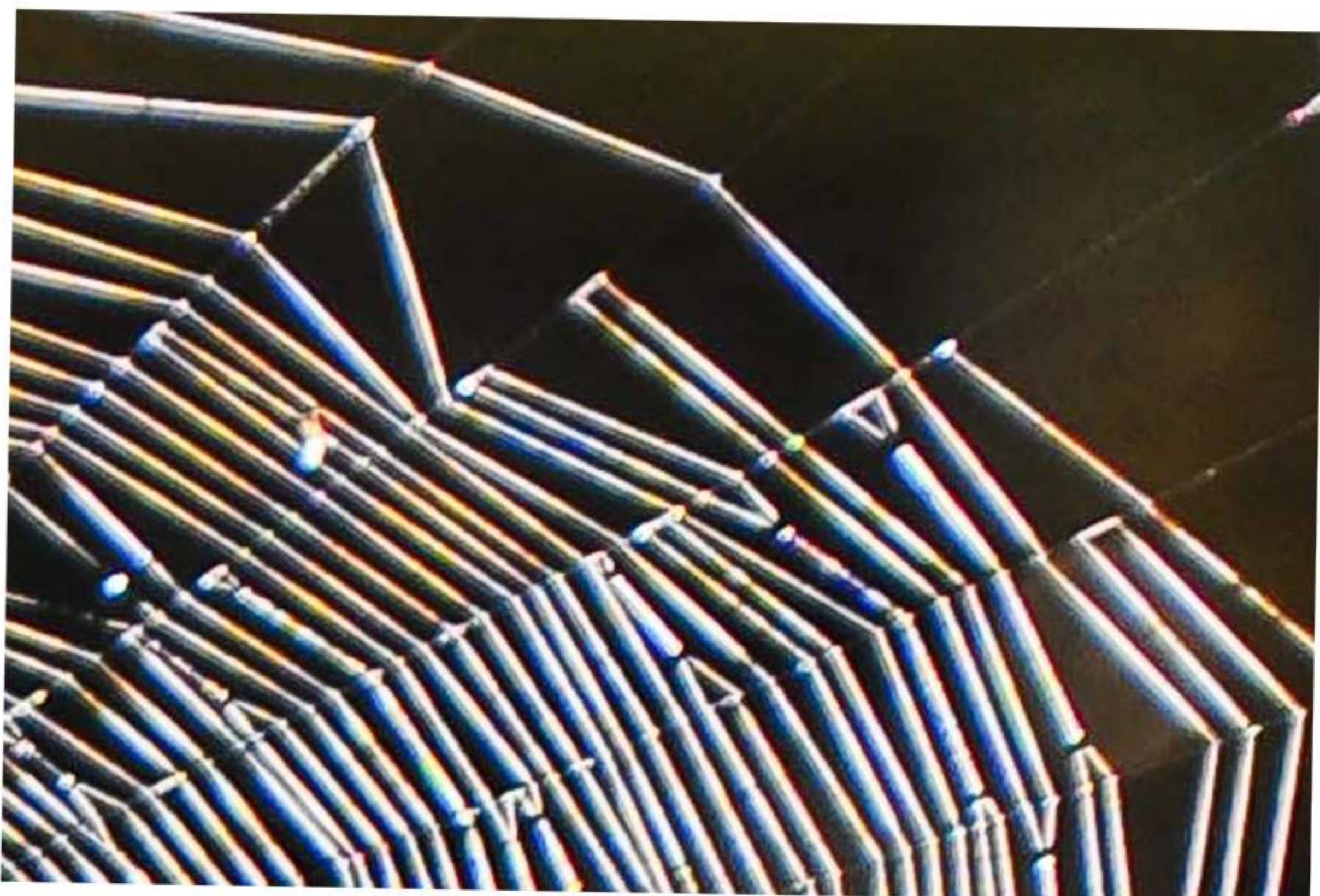
1



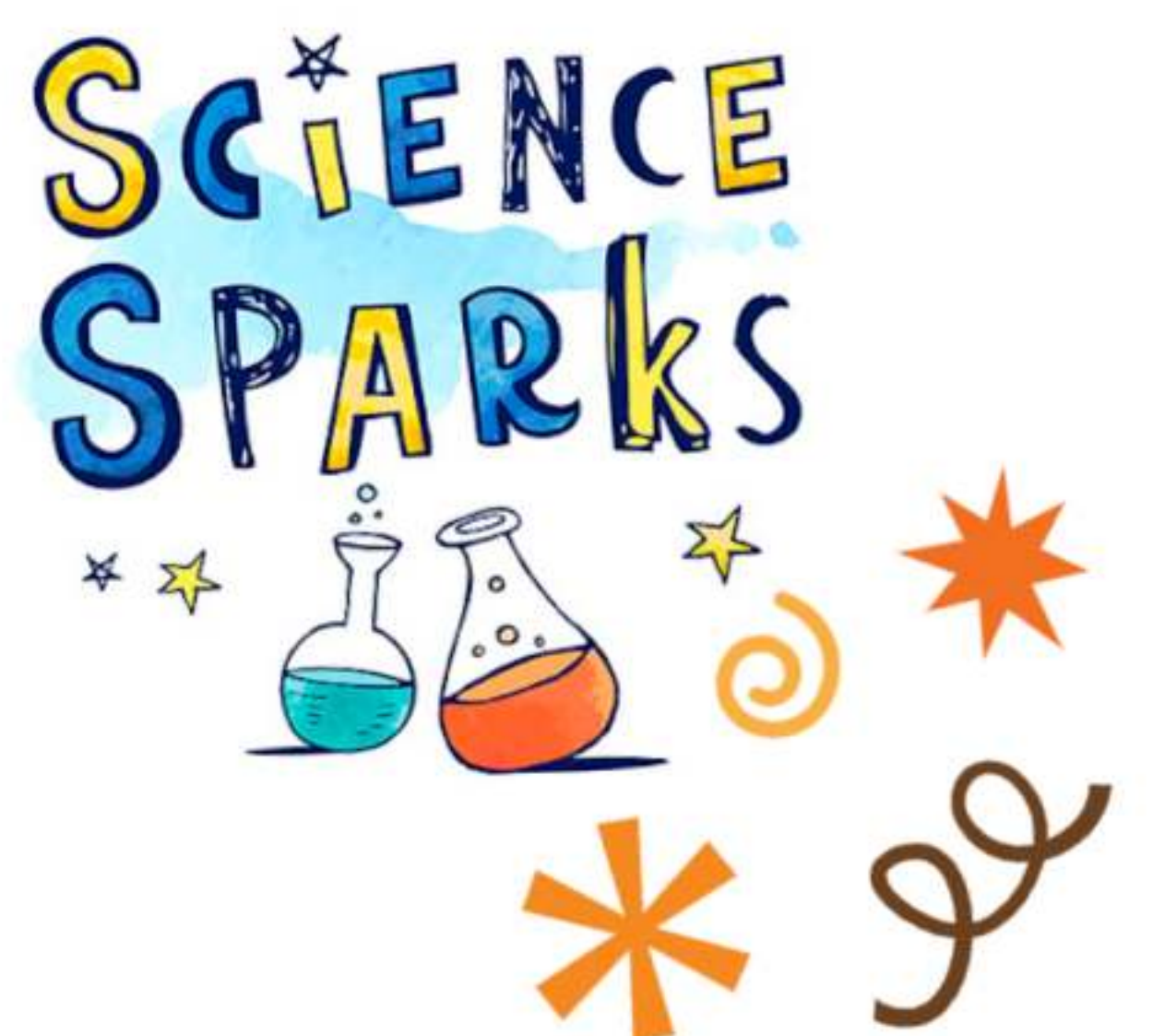
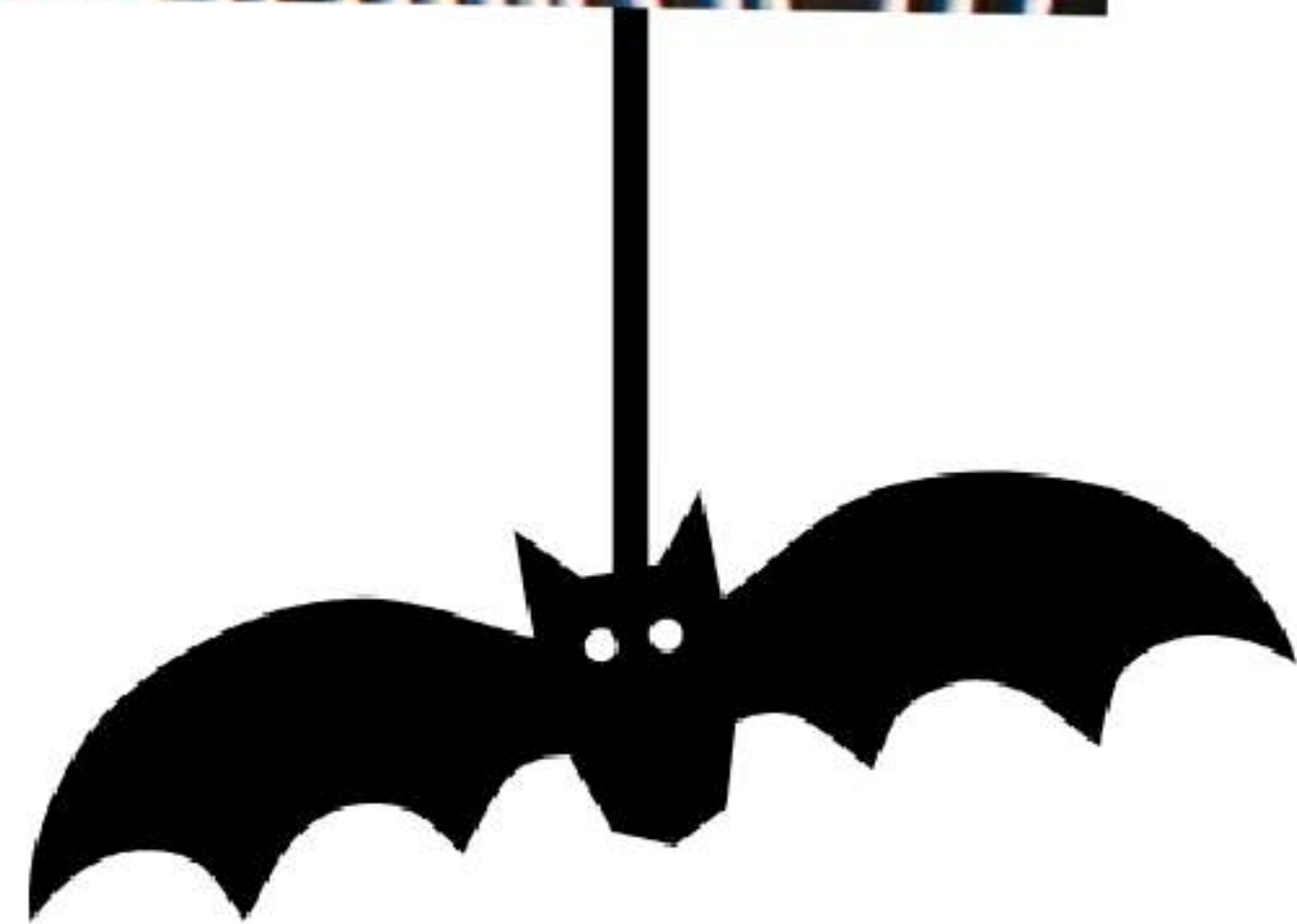
2



3



4



ANSWERS

ROUND 1 - CREEPY CRAWLIES - ANSWERS

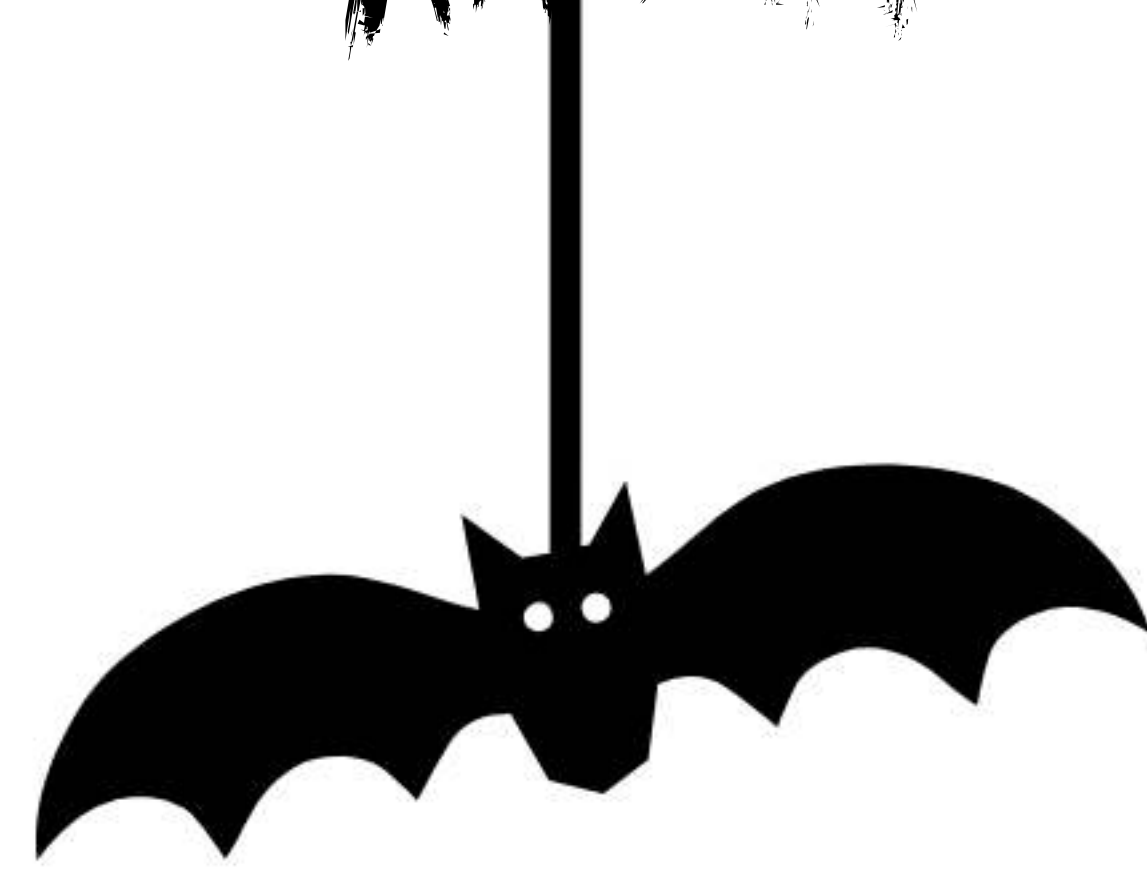
Q1. Arachnophobia

Q2. True

Q3. False

Q4. Antarctica

Q5. Exoskeleton



ROUND 2 - ALL ABOUT BLOOD - ANSWERS

Q1. 5 litres

Q2. 4 months

Q3. 7%

Q4. Scab

Q5. Biconcave disc

ROUND 3 - PUMPKIN - ANSWERS

Q1. Fruit

Q2. 500

Q3. Jack o lantern

Q4. True

Q5. Cinderella

Q6. True

Q7. Beta-Carotene

Q8. Potato, turnip or beetroot

ROUND 4 - WHAT IS IT? - ANSWERS

Q1. Pumpkin

Q2. Bat wing

Q3. Spider Web

Q4. Spider

